



Milton Ulladulla Hospital Cancer Care House Works

Health Infrastructure

Design Review Report

IA325100-MILTON-AR-CC-000001 | B

Revision Date

11/04/2025

Document history and status

Revision	Date	Description	By	Review	Approved
A	28/02/2025	Design Review Report	DM	DM	CY
B	11/04/2025	Design Review Report	DM	DM	CY

Distribution of copies

Revision	Issue approved	Date issued	Issued to	Comments
B	11/04/2025	28/02/2025	JSP	Design Development (DD)

Contents

1. Architect Statement2

2. Design Guide for Health3

3. Stakeholder Design Consultation Process for Cancer Care House Works5

4. Crime Prevention Through Environmental Design (CPTED).....6

5. Alternatives and Options Considered – Cancer Care House Works7

6. Visual Impact Analysis – Cancer Care House9

6.1 Site Overview: Cancer Care House at Milton Ulladulla Hospital.....9

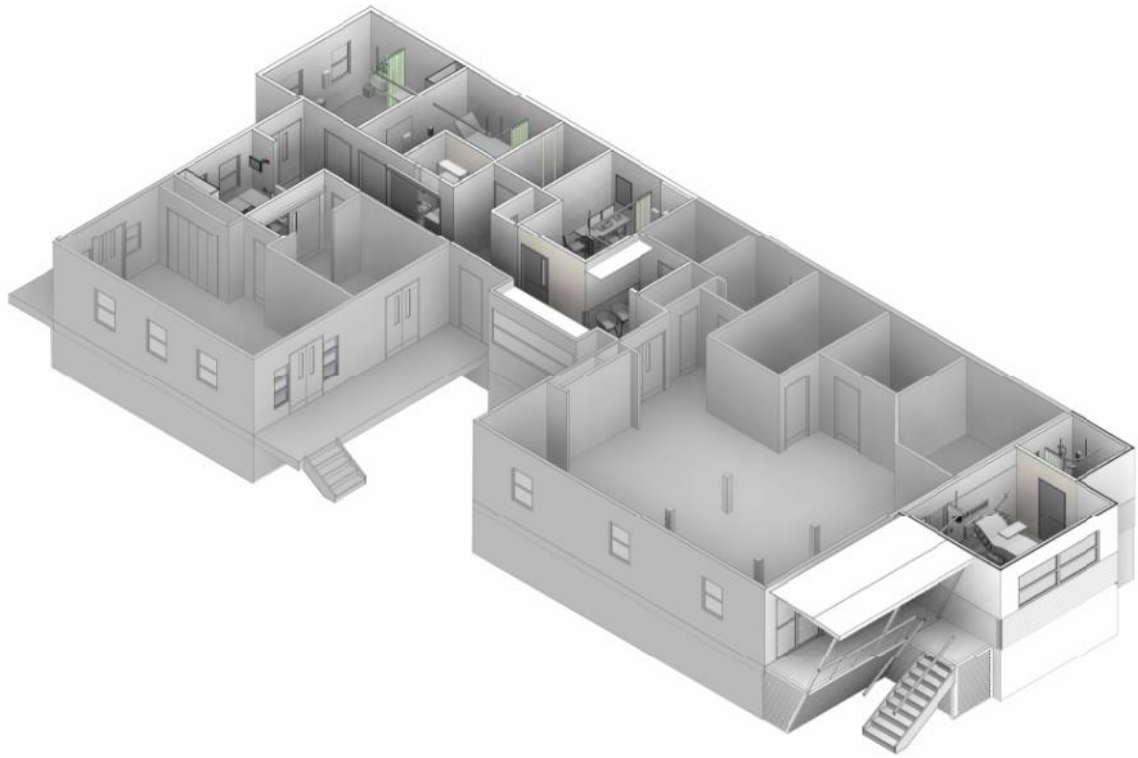
6.2 Site Layout and Surrounding Landscapes..... 10

6.3 Main Entry Points and Access 10

6.4 Existing Cancer Care House Structure 11

6.5 Visual Impact Analysis for Cancer Care House Works 12

1. Architect Statement



Isometric View of the Cancer Care House Upgrades

The Cancer Care House Works project is a thoughtful and compassionate initiative aimed at enhancing the functionality and comfort of the facility. The key elements of this project include:

New Extension for a Single Bedroom with Ensuite

A new extension will be added to the existing building to include a single bedroom with an ensuite. This addition is designed to provide a private and serene space for patients, ensuring they have a comfortable and restful environment during their treatment.

Conversion of Existing Treatment Rooms to Consult Rooms

The existing treatment rooms will be converted into consult rooms. This change will facilitate more personalized and private consultations between patients and healthcare providers. Additionally, the second consult room will be rearranged to accommodate the relocation of the cleaner's room, optimizing the use of space and improving operational efficiency.

Rearrangement of Reception and Waiting Area Creating a New Consult Room

The reception and waiting area will be reconfigured to create a new consult room and a new reception space near the front entry. This rearrangement aims to enhance the flow of the space, making it more welcoming and accessible for patients and visitors.

These modifications are designed with the well-being of patients in mind, ensuring that the Cancer Care House continues to provide a supportive and healing environment. The aim is to create a space that meets the needs of patients and staff, fostering a sense of comfort and care throughout their journey.

2. Design Guide for Health

The Cancer Care House Works project, guided by the NSW Design Guide for Health, aims to create a more efficient, comfortable, and supportive environment for both patients and staff. The following key points highlight the design improvements and their benefits:

Enhanced Patient Experience

The extension to the north creates a new treatment zone that leverages the outside views from the bedroom. This design choice not only provides a calming and therapeutic environment for patients but also integrates seamlessly with existing treatment spaces. The rearrangement of spaces in the refurbishment area ensures that patients have a positive experience from the moment they enter the facility, enhancing their overall journey through care.

Improved Workflow

The design enhancements are focused on streamlining the workflow for both patients and staff. By optimizing the layout and functionality of the spaces, the project aims to reduce unnecessary steps and delays, ensuring a more efficient and effective care delivery process. This improvement helps in minimizing wait times and enhancing the overall efficiency of the facility.

Improved Accessibility

The new design addresses issues of spatial disorientation and accessibility, making it easier for patients to navigate the facility. Intuitive layouts, and accessible pathways ensure that all patients, including those with mobility challenges, can move through the space with ease and confidence.



Plan of Cancer Care House Works

Improved Communication

The design improvements facilitate better communication between staff and patients from the moment they enter the facility. By creating open and accessible communication points, the project enhances overall care coordination, ensuring that patients receive timely and accurate information about their treatment and care.

Maximized Views

The new northern façade wall of the Single Bedroom will feature windows designed to maximize outside views. This design element enhances the connection between the interior spaces and the natural surroundings, providing patients with a sense of tranquillity and well-being. Natural light and views of the outdoors are known to have positive effects on patient recovery and mental health.

Efficient Workflow

The placement of the new single bedroom is strategically planned to be close to the existing staff base. This reduces the travel distance needed for staff to attend to patients, resulting in a more efficient workflow. By minimizing the time spent moving between spaces, staff can focus more on patient care and less on logistical challenges.

Continuity of Materiality

The design maintains the warm and therapeutic materiality of the existing facility. By using similar materials and finishes, the project ensures a seamless and comforting environment for patients. This continuity helps in creating a familiar and reassuring atmosphere, which is crucial for patient comfort and well-being.

Complementary Design

The new works are designed to complement the existing model of care and services. By integrating the new design elements with the current operations, the project ensures minimal to no impact on the

existing atmosphere of the Cancer Care House. This approach maintains the integrity of the facility while enhancing its functionality and aesthetics.

Compact Design and Seamless Integration

The extension has a small footprint, minimizing its visual impact on the surrounding landscape and maintaining the overall aesthetic harmony of the site. This compact design ensures that the natural beauty of the surroundings is preserved.

Strategic Placement

The location of the new Single Bedroom and Ensuite has been shifted closer to the site boundary line, aligning with the existing structure. This strategic placement retains the outside views from the existing treatment space, enhancing the visual experience for patients and staff.

In conclusion, the Cancer Care House Works project embodies a thoughtful and patient-centred approach to healthcare design. By addressing key aspects such as workflow efficiency, accessibility, communication, and patient experience, the project aims to create a healing environment that supports both patients and staff. The integration of natural views, continuity of materiality, and complementary design elements ensures that the facility remains a welcoming and therapeutic space for all.

3. Stakeholder Design Consultation Process for Cancer Care House Works

The Stakeholder Design Consultation Process for the Cancer Care House Works was conducted through a series of structured engagements to ensure comprehensive input and alignment with project goals. The process included:

Initial High-Level Consultation:

- Engaged with the executive group to understand the brief and overall expectations of the design.
- Clarified what the facility aimed to achieve, its priorities, and the extent of the work required.

Design Consultation Series:

- Conducted a series of consultations to discuss options outlined in the "Alternatives and Options Considered" section of the report.
- Focused on identifying the most efficient option that minimized impact on the existing structure and operations while ensuring cost-effective design solutions.

Schematic Design Workshops:

- Collaborated with the Project User group to design the spatial flow and arrangement of spaces.

- Discussed how the proposed design affected the current flow and identified improvements to enhance functionality.

Design Development Workshops:

- Held a series of workshops with the Project User group to refine the design.
- Focused on detailed requirements such as internal flow, furniture, fixtures, and equipment (FF&E), and security considerations.

This structured approach ensured that all stakeholders were actively involved in the design process, leading to a well-informed and cohesive outcome for the Cancer Care House Works.

4. Crime Prevention Through Environmental Design (CPTED)

The following principles adhere to the Shoalhaven Council CPTED guidelines, ensuring that the Cancer Care House Works is designed with safety and security in mind. The facility has been developed to address these principles comprehensively, minimizing opportunities for concealment and/or entrapment on the site. By implementing these guidelines, the design aims to create a secure environment that promotes the well-being of both staff and patients.

Clear Definition of Controlled Space

- Distinct boundaries between staff and patient areas to ensure controlled access and enhance security.
- Use of barriers such as walls, doors, and signage to clearly demarcate these spaces.

Safe and Secure Access for Staff

- Secure entry points for staff, such as keycard access, to prevent unauthorized entry.

Clear Traffic Corridors for Both Patient and Staff

- Traffic corridors to be wide, well-lit, and free of obstructions to facilitate smooth and safe movement for both patients and staff.

Strategic Placement of Safety Egress

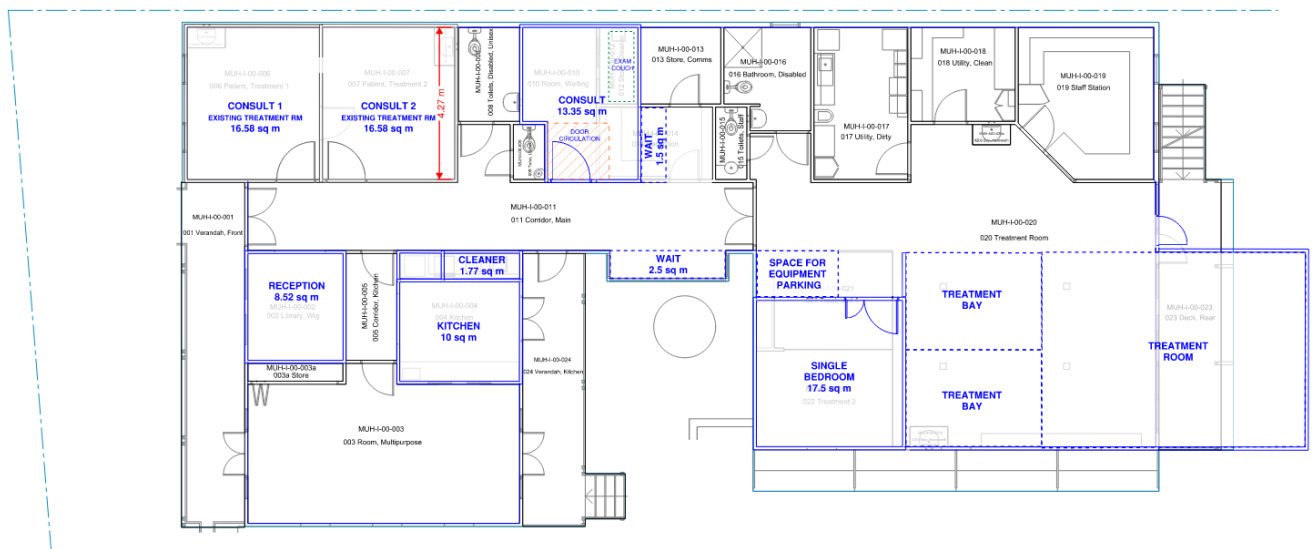
- Emergency exits and egress points positioned strategically to ensure quick and safe evacuation in case of an emergency.
- Ensure that all egress points are clearly marked, unobstructed, and easily accessible from all areas within the Cancer Care House.

5. Alternatives and Options Considered – Cancer Care House Works

To enhance the Cancer Care House, the team evaluated several redesign options. Each option aims to improve patient care and staff efficiency while making the best use of available space. These includes:

Alternate Option 1: Relocated Treatment Area

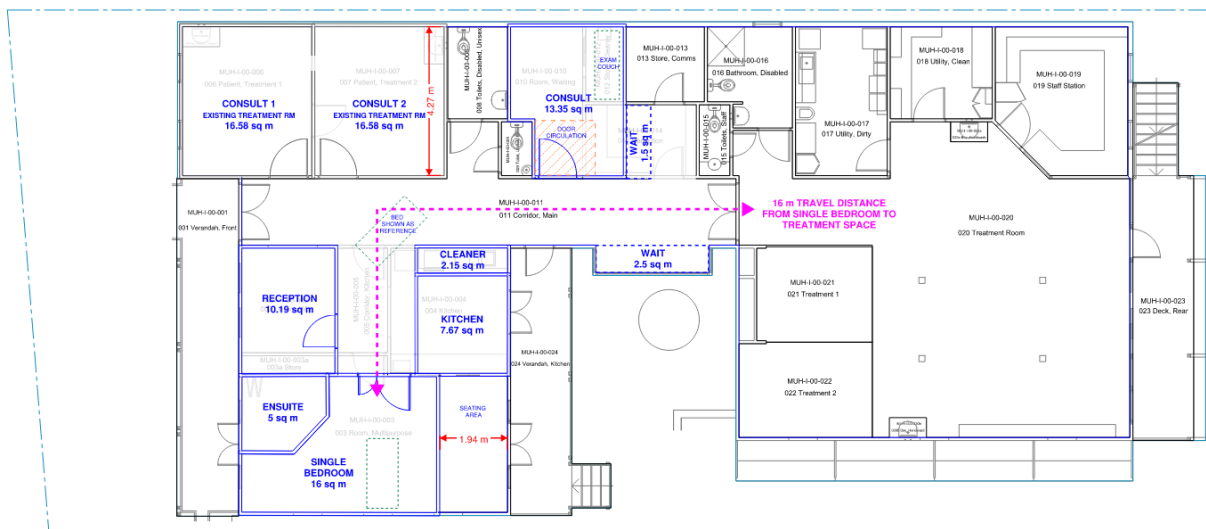
The reception and store will be relocated near the entry. A new Consult room room will be introduced in addition to the two (2) Treatment Rooms that will be repurposed as Consult Rooms. In this arrangement, the kitchen area will be reduced to create space for a cleaner's cupboard. A new single bedroom will be created at the location of the displaced treatment bays. Two medical services panels and four medical services poles will be relocated to suit the new layout as a result of the treatment bays and treatment rooms being shifted.



Relocated Treatment Area

Alternate Option 2: Single Bedroom at Existing Multi-Purpose Room

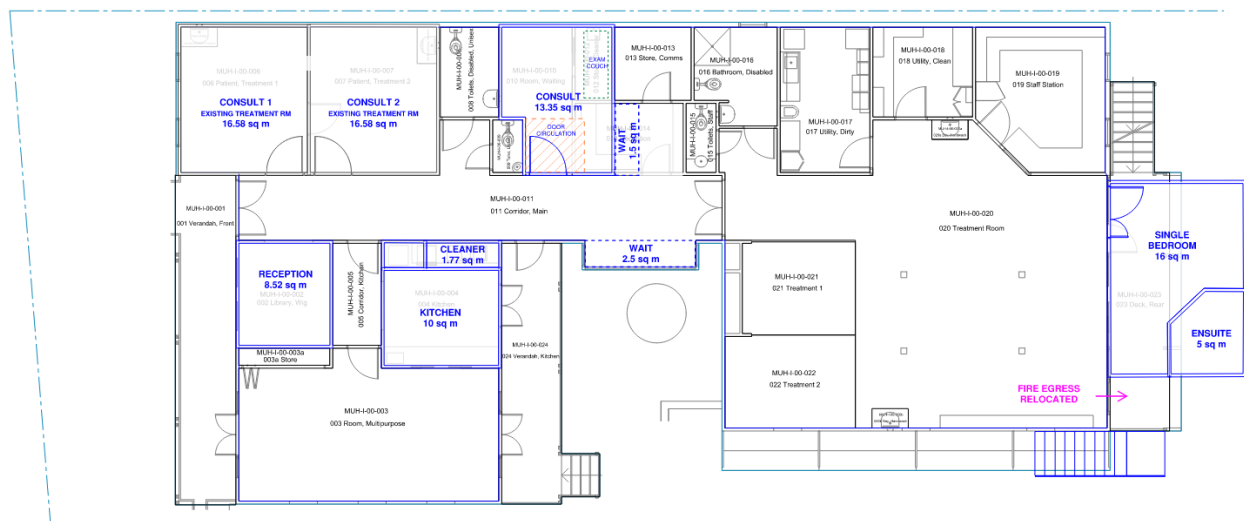
A new single bedroom with an ensuite will replace the multi-purpose room. This bedroom will be isolated and separate from the rest of the patient areas, with no direct visibility from the staff station. The distance between the single bedroom and the treatment area will be 16 meters. Additionally, the reception will be relocated near the main entry, and the kitchen area will be reduced.



Single Bedroom at Existing Multi-Purpose Room

Alternate Option 3: New Single Bedroom in Front of Existing Treatment Space

A new single bedroom with an ensuite will be created. The existing glazing and external views will be impacted. One parking bay will be affected. The reception area will be relocated near the main entry, and the kitchen space will be reduced.



New Single Bedroom in Front of Existing Treatment Space

Alternate Option 4 (Preferred Option) – Extension at East of Existing Staff Station

A new extension with a single bedroom and ensuite will be created to the east of the existing staff station. The stairs to the outside will be relocated. As part of the Design Development Review, the second consult room was rearranged to create space for a new cleaner's room. A new consult room will

After careful consideration of all the options, Alternate Option 4 is the preferred design. This option ensures minimal impact on existing spaces while providing the necessary facilities and maintaining the functionality of the Cancer Care House. The new extension with a single bedroom and ensuite, along with the strategic relocation of the stairs and consult rooms, offers an optimal solution that meets the needs of both patients and staff.

The Cancer Care House, part of the Milton Ulladulla Community Cancer Services Centre, is a vital facility located within the Milton Ulladulla Hospital. It serves the Southern Shoalhaven region, providing essential cancer care services to the local community.

6.2 Site Layout and Surrounding Landscapes



Cancer Care House within the Milton Ulladulla Hospital Grounds

Site Layout: The Cancer Care House is situated within the Milton Ulladulla Hospital grounds, easily accessible from the main hospital entrance. The facility includes treatment rooms, consultation areas, and a comfortable waiting area for patients and their families. The layout is designed to ensure privacy and comfort for patients during their visits.


Surrounding Landscapes: The hospital is located in a picturesque area of Milton, surrounded by lush greenery and scenic views. The facility is designed to provide a calming environment, with view to surrounding landscape for patients to relax. The nearby Milton village offers a charming, small-town atmosphere with local shops and cafes, enhancing the overall experience for patients and their families.

6.3 Main Entry Points and Access

Main Entry for Patients: Patients can enter through the main hospital entrance, which is accessible via the Princes Highway. The Cancer Care House is located on the left side as you enter the hospital grounds.

Emergency Access: The facility is equipped with emergency access points to ensure quick and efficient response in case of any urgent medical needs.



-  Main Hospital Entry
-  Emergency / Ambulance
-  Cancer Care House
-  Main Hospital Driveway Entry

MUH Hospital Entry Points and Access

6.4 Existing Cancer Care House Structure

The Cancer Care House at Milton Hospital in Milton, NSW, offers a visually welcoming and supportive environment for patients and their families. The facility is designed to create a calming and therapeutic atmosphere, incorporating natural light, greenery, and comfortable spaces. The use of warm colors and thoughtful interior design elements helps to reduce stress and promote healing.

Additionally, the visual impact of the Cancer Care House extends to its surrounding spaces and landscape. The building seamlessly integrates with the natural environment, enhancing the overall aesthetic of the hospital grounds.

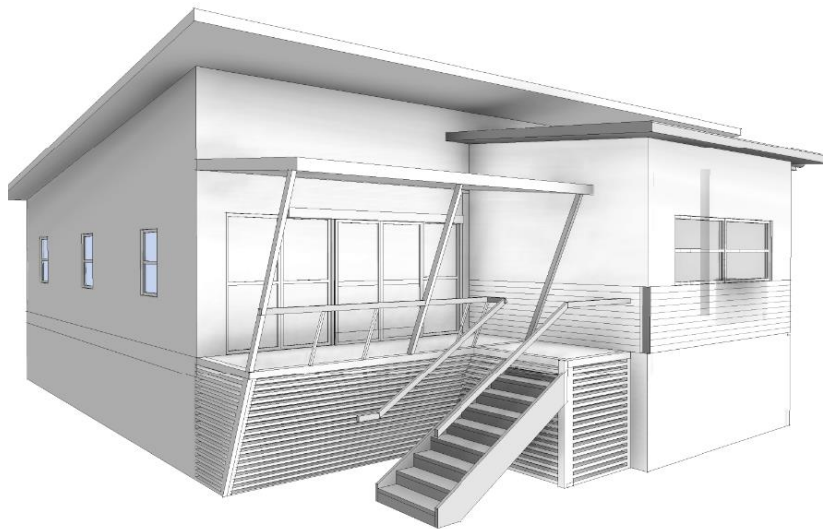


Existing Cancer Care House

6.5 Visual Impact Analysis for Cancer Care House Works

The proposed extension of the Cancer Care House is designed with careful consideration to ensure minimal visual impact on the existing structure and surrounding landscape. The following points outline the key aspects of the visual impact analysis:

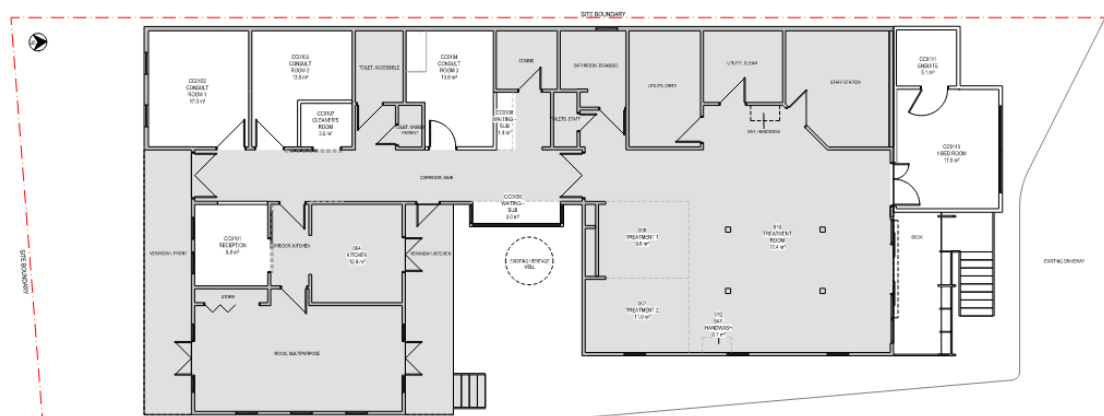
Minimal Impact on Existing Infrastructure: The new extension for a Single Bedroom with Ensuite is designed to attach seamlessly to the existing building and treatment space without affecting the existing driveway and parking bays, ensuring no disruption to current access and functionality.



Study of Cancer Care House Extension (Single Bedroom)

Compact Design: The extension has a small footprint, minimizing its visual impact on the surrounding landscape and maintaining the overall aesthetic harmony of the site.

Strategic Placement: The location of the new Single Bedroom and Ensuite has been shifted closer to the site boundary line, aligning with the existing structure. This strategic placement retains the outside views from the existing treatment space, enhancing the visual experience for patients and staff.



Plan of Cancer Care House Works

Consistent Façade Materiality: The extension's façade will reflect the same materiality as the existing Cancer Care building, using horizontal weatherboard cladding on the new Single Bedroom and Ensuite exterior. Horizontal wooden slatting around the new decking and stairs will further ensure visual consistency.

Seamless Integration: The design and scale of the Cancer Care House extension are intended to have a minimal visual impact on the surrounding landscape. The extension aims for seamless integration with the existing structure and the natural environment, preserving the site's overall visual appeal.



Elevation of Cancer Care House Extension

Maximized Views: The new northern façade wall of the Single Bedroom will feature new windows designed to maximize outside views, enhancing the connection between the interior spaces and the natural surroundings whilst maintaining privacy during treatment.

Decking and Stairs Modification: A portion of the existing decking and stairs will be demolished to accommodate the new single bedroom. The balustrade on the existing decking will be upgraded to comply with DDA requirements while maintaining the materiality of the current building, ensuring safety and aesthetic coherence.

From a public vantage point outside the hospital, the visibility of this minor extension is relatively limited. The location of the extension is at the back of the site, which is lower than the main public road and entry. The height of the extension is also relatively lower than the existing structure. The design aims to blend seamlessly with the existing structure, minimizing any noticeable changes to the hospital's exterior.

Regarding the adjacent property, the extension may slightly alter the current view or vista through the space. However, the impact is expected to be minimal. The design team has taken care to ensure that the extension does not significantly obstruct the view or adversely affect the neighboring property. Any potential concerns about visibility and impact have been carefully considered to maintain a harmonious relationship with the surrounding environment. This was primarily addressed by exploring multiple options of the final location of the extension as shown in the report.



Footprint of Cancer Care House Extension

These statements highlight the thoughtful design and minimal visual impact of the Cancer Care House extension, ensuring it enhances the facility without disrupting its existing harmony.